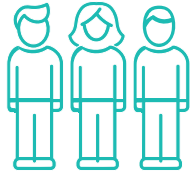


# BEHAVIOURAL STANDARDS

We want to make sure everyone who comes to Butlin's has a lovely time with their family. With this in mind, please make sure everyone in your group is aware of our Behavioural Standards.



Our team work really hard to look after you while you're here and will always be kind and polite. Please show them the same courtesy.



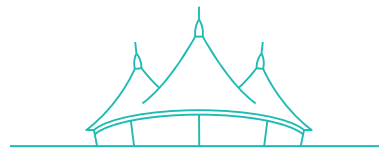
We have dedicated smoking areas around our resort (you'll find them marked on your map). As Butlin's is a family resort, smoking is only permitted in these areas.



Everyone deserves a good nights sleep so please keep the noise down in your accommodation village (especially at night).



Whilst we do our utmost to provide a safe and secure and environment for all our guests, we ask you to make sure you know where your children are and what they are doing at all times.



We treasure Butlin's, please help us look after our resort while you are here.



Butlin's is a place for families, please watch your language, drink responsibly and treat other guests with courtesy.

**We would hate to see it happen, however to protect all our guests and our resort experience, if any serious incidents or persistent bad behaviour is reported, we will ask those guests to leave our resort.**